

Online STEM Teaching Meeting the Needs of all Learners

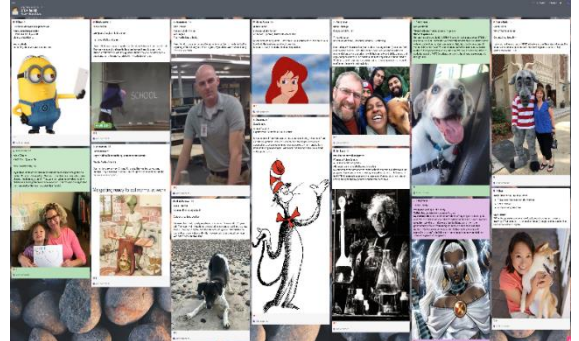
Target Audience: PK -12 educators, coaches and administrators

Due to high demand, we offer three types of programs:

1. Introduction to Online STEM Teaching (*Tools and Resources*)

Explore 3-5 online tools and high-quality STEM resources and get comfortable with embedding them in online assignments. Collaborate with grade level colleagues to create ***differentiated***, tasks for your students that are aligned with standards.

- **June 29 & 30, 2020** - Grades PK-5 educators and coaches
- **July 1 & 2, 2020** – Grade 6-12 educators and coaches



2. Advanced Online STEM Teaching (*Pedagogy and Group work*)

Designed for participants who are comfortable using a variety of online tools and resources. Collaborate with grade level colleagues to address pedagogical challenges and successful strategies for implementing group work while teaching remotely. You will apply online tools and resources and incorporate problem based learning to create ***differentiated***, standards-aligned problem-based tasks for your students.

- **July 8 & 9, 2020** - Grade PK-5 educators and coaches
- **July 9 & 10, 2020** – Grade 6-12 educators and coaches

Hours: Two half-day sessions + 3 hrs on your own (see dates above).

- **Pre-PD work (*on your own*):** 1.5 hrs
- **1st date:** 8:30 am – 12 pm + 1.5 hrs (*on your own*)
- **2nd date:** 8:30 am – 12 pm

Fee: \$110/2-day session

(special rate for Worcester Public Schools educators; scholarships available)

PDPs/CEUs: 10/1.0 per 2-day session

3. Online STEM Teaching for Administrators & Coaches

Unpack challenges and successful strategies to guide your staff in embracing meaningful online teaching experiences, aligned with standards. Collaborate with other administrators to discuss the legalities and privacy concerns that occur with online teaching.

Date/Time: June 30, 2020, 1:00 – 3:30 pm

Fee: \$45 (*special rate for Worcester Public Schools educators; scholarships available*)

PDPs/CEUs: 2.5/0.25

Registration is NOW OPEN!

For questions, contact Donna Taylor at dltaylor@wpi.edu