

Peer Services: Recruitment, Integration, and Supervision

AJ Ernst, PhD

Senior Technical Expert, JBS International, Inc.

Tanya Kraege, MSW, CSAC, APSW

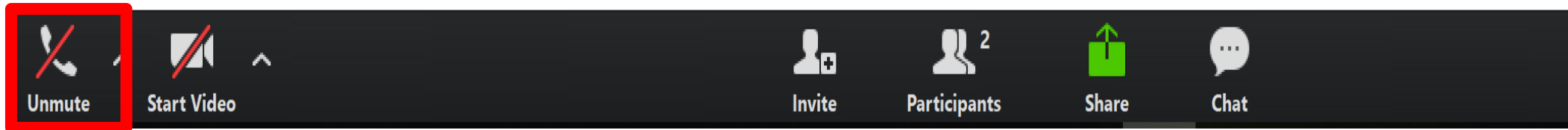
Drug Poisoning Prevention Team Supervisor, Safe Communities MDC



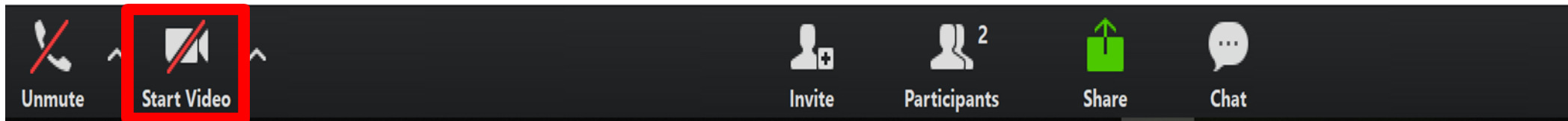
RURAL COMMUNITIES OPIOID RESPONSE PROGRAM - TECHNICAL ASSISTANCE

Unmuting Lines and Enabling Video

To unmute your line to speak, please click on the unmute icon on the lower left side of your Zoom window.

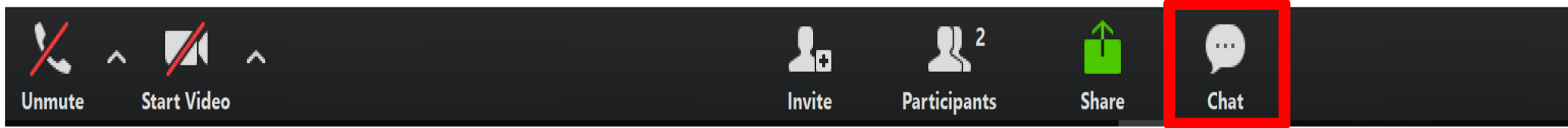


To enable your video, please click on the start video icon on the lower left side of your Zoom window.



Submitting Questions and Comments

You can also submit your questions and comments by using the chat feature. To open the chat window, click on the chat icon located on the bottom center of your Zoom window.



Learning Objectives



Define peer provider



Understand the relationship between peer providers and recovery-oriented approaches and settings



Identify the important steps peers play in recovery



Understand the role of supervision in peer services



Identify resources and strategies for recruiting and integrating peer providers



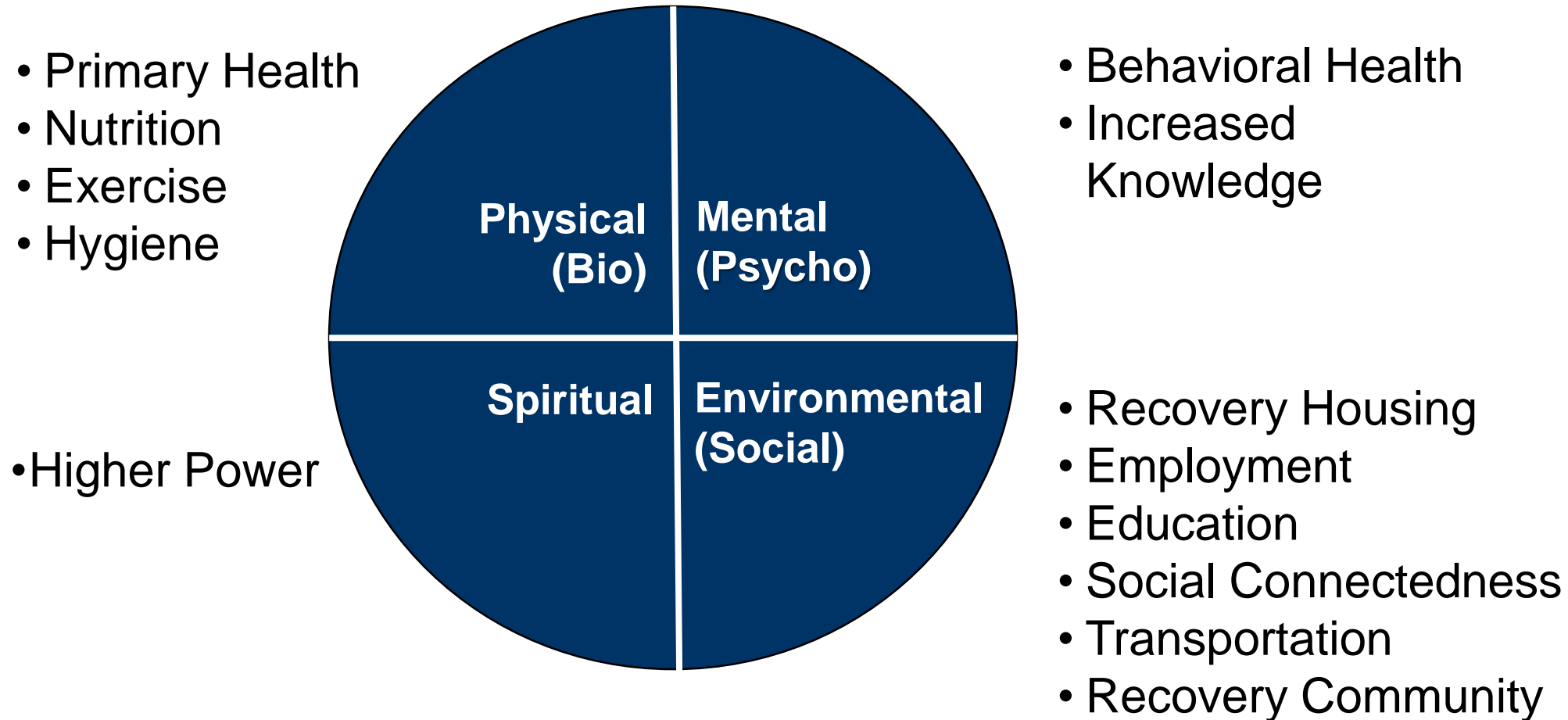
What Is a Peer Provider?

A peer provider (e.g., certified peer specialist, peer support specialist, recovery coach) is a person who **uses his or her lived experience of recovery** from mental illness and/or addiction, plus skills learned in formal training, to deliver services to promote recovery and resiliency.

<https://www.integration.samhsa.gov/workforce/team-members/peer-providers>



Lived Experience



Peers in Opioid Use Disorder (OUD) Strategies

Education

- Prescriber education
- Patient, family, community education
- Naloxone application
- OUD prevention

Tracking and Monitoring

- Prescription drug monitoring program (PDMP)
- Surveillance

Enforcement

- Law enforcement training on prescription drug misuse and diversion
- Drug courts

Overdose Reversal

- Naloxone access

Medication Disposal

- Keeping medications safe at home
- Proper medication disposal guidelines consistent with Food and Drug Administration standards
- Leading community take-back programs

Policies, Legislation, and Partnerships

- Good Samaritan laws etc. (supporting core factors and task force objectives)

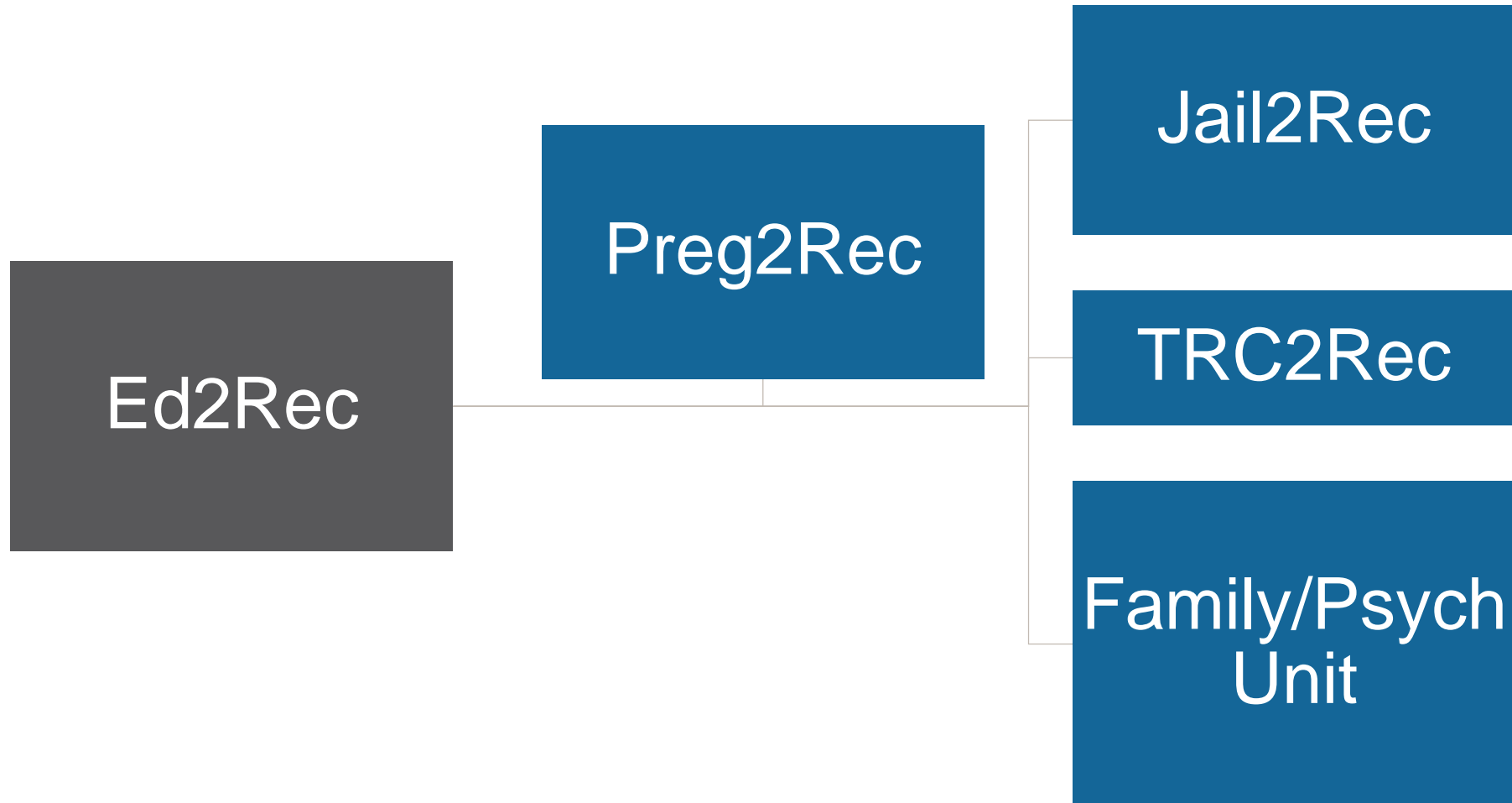
Other

Service Collaboration

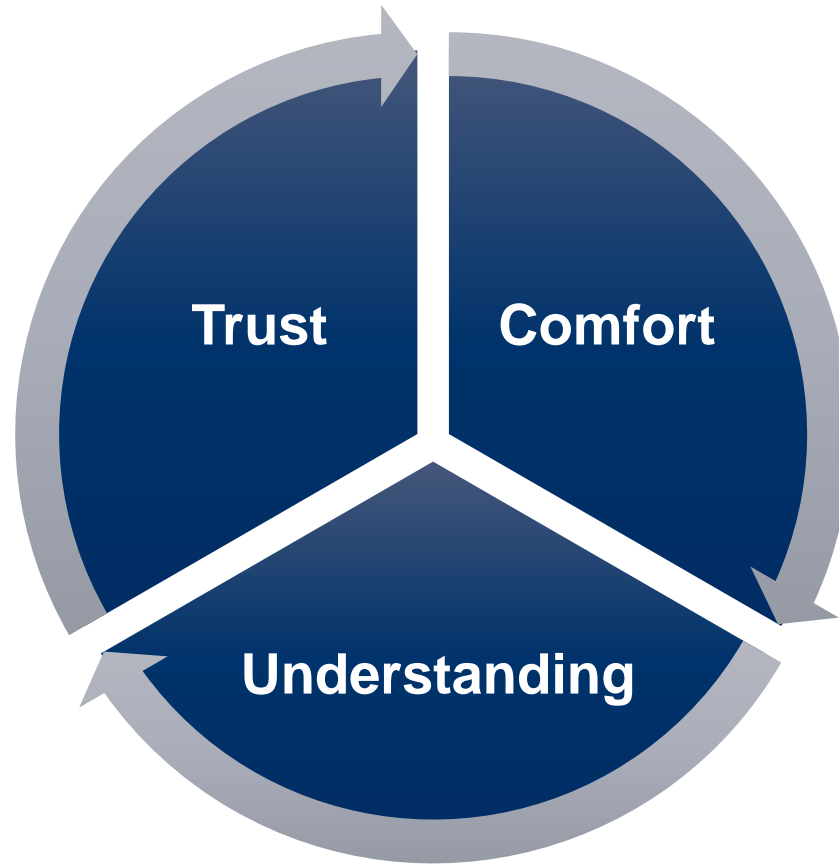
- Medication-assisted treatment (MAT)
- First responders, detox, outpatient, residential treatment/emergency room
- Recovery community network
- Sober housing
- Employment opportunities



Peer Programs



Steps Peers Play in Recovery



Empower

Lead by Example

Accountability

Confidence

Boundaries

Relationships

Advocacy



Wellness Recovery Action Plan

Hope

**Personal
Responsibility**

Education

Self-Advocacy

Support



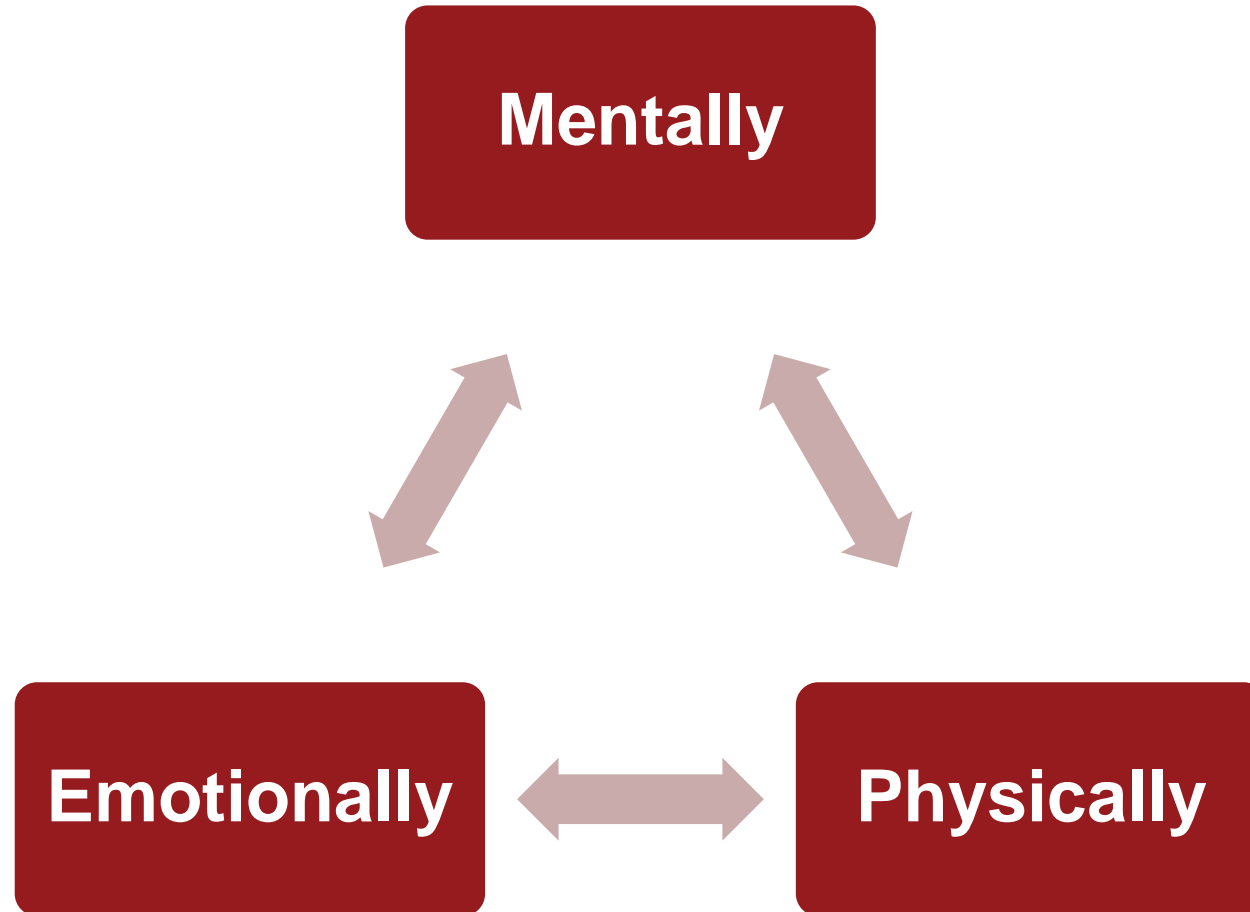
Person-Centered Planning



Resource Broker



Meet Individuals Where They Are



Supervision in Peer Services

Case Review

Boundaries

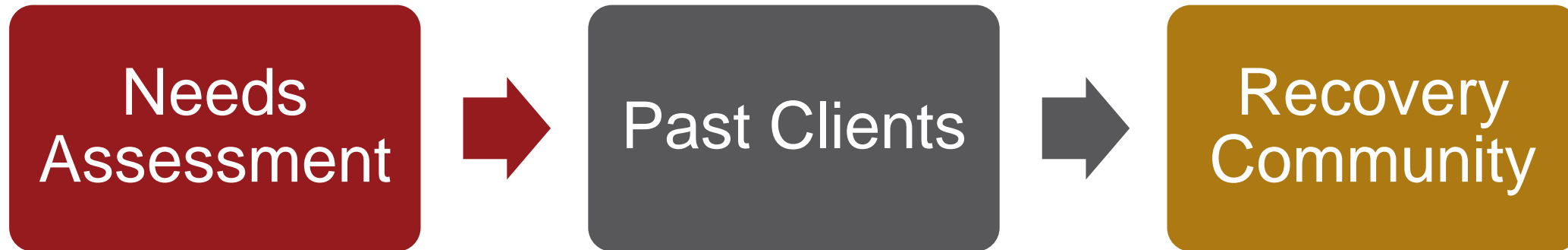
Health Insurance Portability and
Accountability Act (HIPAA)

Professional Development

Self-Care



Strategies for Recruiting and Integrating Peer Providers



Recruitment Challenges

Will any substance use disorder experience work, or is MAT preferable for peers to work with OUD?

Are there conflicts if peer staff members personally know those they serve?

Must peers continue to work a recovery program (e.g., attend meetings)?

Should peers be excluded from staff social events if alcohol is present?

How do you know whether a peer applicant is in recovery?



Staff Concerns

Will peers
take my job?



Won't peers
relapse?



Will peers tell
me client
info?



Resources

- *Methadone Maintenance Myths and Resources*, Missouri Department of Mental Health. This brief summary describes the myths and misunderstandings surrounding methadone and presents the scientific evidence supporting MAT.

<https://dmh.mo.gov/docs/ada/methadonemyths.pdf>

- *The National Council on Alcohol and Drug Dependence (NCADD) Consumer Guide to Medication-Assisted Recovery*. This NCADD guide addresses some of the misinformation and stigma that surround medication-assisted recovery.

<https://www.ncadd.org/images/stories/PDF/Consumer-Guide-Medication-Assisted-Recovery.pdf>



Resources

- *Peers Supporting Recovery From Substance Use Disorder*, Substance Abuse and Mental Health Services Administration. This pamphlet describes peer recovery services and sources of evidence for peer recovery coaching.
https://www.samhsa.gov/sites/default/files/programs_campaigns/brss_tacs/peers-supporting-recovery-substance-use-disorders-2017.pdf
- *Supervisor Guide: Peer Support Whole Health and Wellness*, Georgia Department of Behavioral Health and Developmental Disabilities. This manual outlines essential foundations of the Peer Support Whole Health and Wellness Coach Role, including the scope of practice, key roles, responsibilities, and tasks.
https://www.integration.samhsa.gov/Supervisor_Guide_to_Peer_Support_Whole_Health_and_Wellness_-c-_2013.pdf

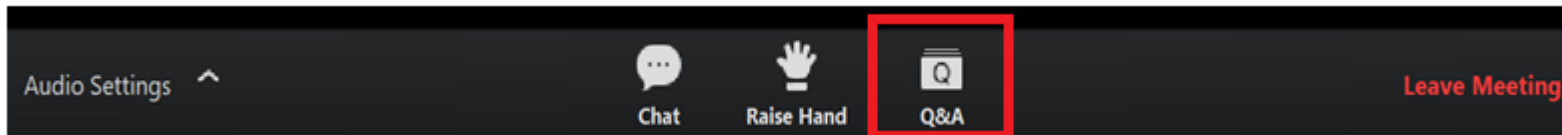


Submitting Questions and Comments



Submit questions by using the Q&A feature.

To open your Q&A window, click on the Q&A icon on the bottom center of your Zoom window.



Thank you

The purpose of RCORP is to support treatment for and prevention of substance use disorder, including opioid use disorder, in rural counties at the highest risk for substance use disorder.

AJ Ernst, PhD

(301) 509-5851

aernst@jbsinternational.com



RURAL COMMUNITIES OPIOID RESPONSE PROGRAM - TECHNICAL ASSISTANCE